

Texas Educational Colorguard Association



2019

Percussion and Winds State Championships

Calallen High School
4001 Wildcat Dr.
Corpus Christi, TX 78410

TECA Percussion and Winds Championships Information

Calallen High School is located at:
4001 Wildcat Dr. Corpus Christi, TX 78410

Contest Information:

- All contest rules and regulations from the 2018-2019 TECA Constitution and By Laws and the 2018-2019 WGI Rule Books will be followed.
- All props, performance shoes and equipment must be padded and taped according to the TECA and WGI rule books specifications.
- Please refer to the 2018-2019 WGI Colorguard, Percussion, and Winds and Adjudication Manuals and Rule Books for further information.

Directions:

From the South:

- Take I-69/ US-77 N Exit to FM 624/ Northwest Blvd. / Leopard St.
- Turn Left onto Left onto Northwest Blvd. / Leopard
- Turn right onto Wildcat Dr.

From the North:

- Take I-37 S Exit 14 for US-77 toward Kingsville / Brownsville
- Turn Right onto Northwest Blvd. / FM-624 W
- Turn right onto Wildcat Dr.

Parking:

- Buses and Equipment Trucks will park in the back parking lot off Wildcat Dr.
- Spectators will park in the front of the school off Northwest Blvd/ FM-624.
Spectator Entry/ Admission:
- Spectators will enter at the West entrance to the gym.

Concessions:

- Spectator Concessions will located at the Spectator Entrance.
- Performer Concession will be located inside the cafeteria.

Admission:

- Adults - \$15
- Students - \$10
- Children 5 & Under - Free

Air Grams/ Shout Outs:

Air Grams will be available for purchase for \$5. These can be purchased inside the spectator entrance.

Check In:

- Check In will be stationed on the back entrance of the school.
- Each Unit will receive 2 Director wristbands, wristbands for all performers, and up to 10 additional wristbands for crew members.

Unit Storage:

- Tables will be set up and marked for each group to store personal items.

Prop Storage:

- Each group will receive an individual prop storage area in the back hallways of the school.

Percussion Warm Up:

- Percussion Warm-Up will take place in the back parking lot near bus and equipment parking.
- We will provide Percussion Units a 20 minute Indoor Warm Up, in the Warm Up Gym, if facing rain the day of the contest.

Winds Warm Up:

Indoor Wind Warm Up will take place in the Warm Up Gym.

Group Photos:

- Group Photos will take place in the auditorium
- Please Arrive at your designated time

- Please Arrive at your designated time

Unit Entrance:

- From Warm Up, All Units will enter through the back side of the school, west of the cafeteria.
- Winds Units will proceed to the Warm Up Gym. Percussion Units will line up for entrance to the Performance Gym.
- *An additional, oversized door will be provided for large equipment*

Gym Flow/ Timeline:

We will use a horizontal timeline for the contest. Groups will enter through the stage right front door. Groups will exit through the stage right back door.

Floor Folding Area:

The floor folding area will be located on the South side of the Performance Gym.

Director Hospitality:

Director Hospitality will be located in the teacher's lounge.

Full Ensemble Retreat:

- The Lineup for Full Retreat will take place in the Warm Up Gym.
- All Performers should report to the Gym immediately after the final group's performance.

The attached flow diagrams layout everything discussed. Please do not hesitate to contact me if you have any questions!

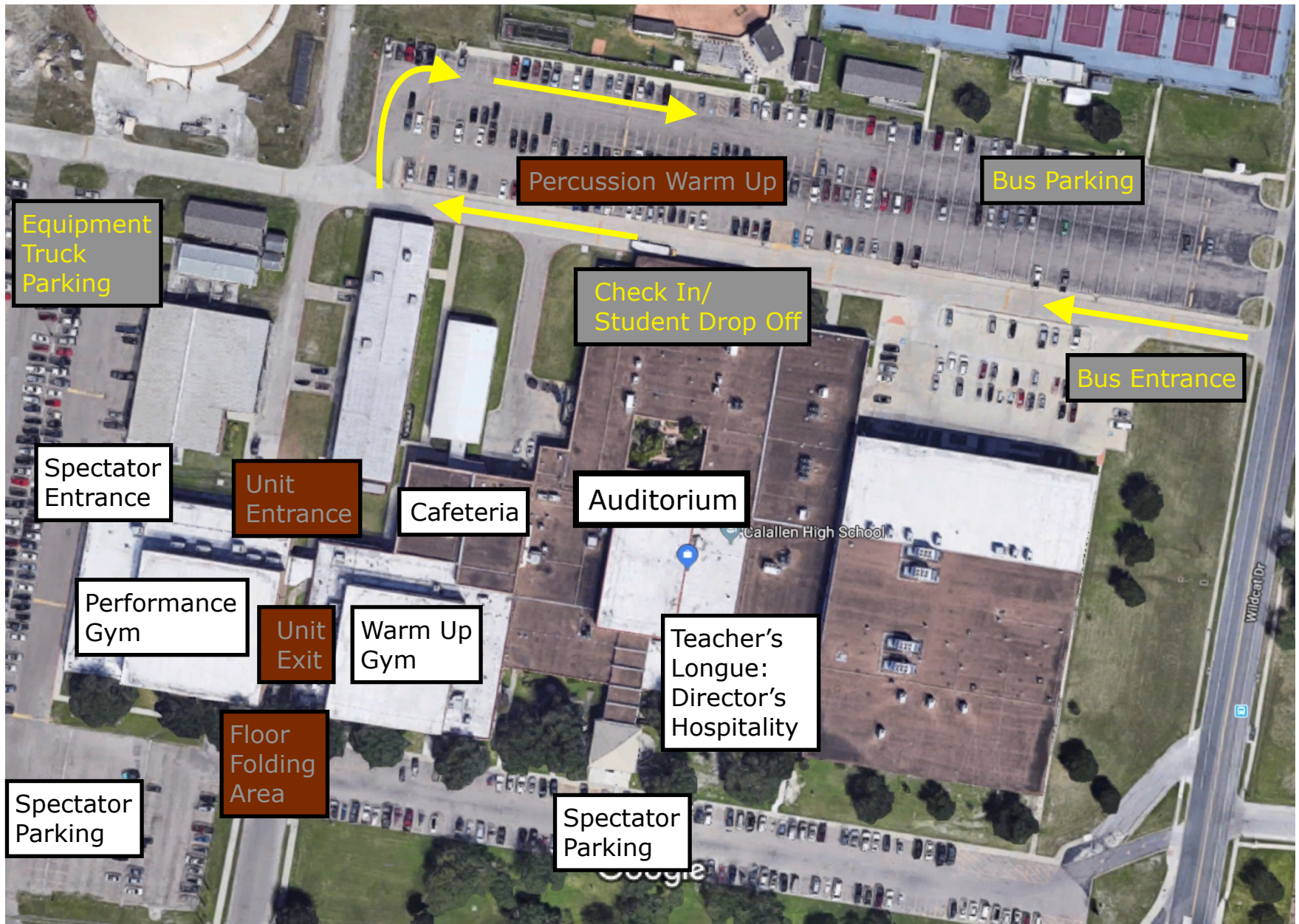
Thank you,

Nic Goodman

Percussion Director, Calallen High School

ngoodman@calallen.org

Cell: (618) 979-1403



Bus Parking

Percussion Warm Up

All Purpose Practice Facility

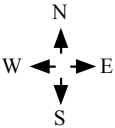
FEMA Dome

Unit Check In

Equipment Truck Parking

DAEP
DAEP
AG. SHOP
OFF.
CLRM
CLRM
CLRM

IND.
CLRM
OFF.
INDUSTRIAL ARTS
ART2
ART1
J
HLT



213
211
209
207
205
203
201
206
305
204
303
202
301
316
314
424
312
423
425
306
420
304
419
302
418

Additional Unit and Prop Storage

CHOIR
BAND
BAND
428
427
426
425
424
423
422
421
420
419
418
417
416
415
414
413
412
411
410
409
408
407
406

Spectator Entrance

Oversized Equipment Entrance

Unit Storage

Restrooms

Concessions

Enter

Concessions

Group Photos

Math Hall
406 408 410 412 414 416B
507 509 511 513 515 517

Restrooms

Unit Ready

Restrooms

Unit Exit

Performance Gym

Warm Up Gym

First Aid/
Director
Hospitality

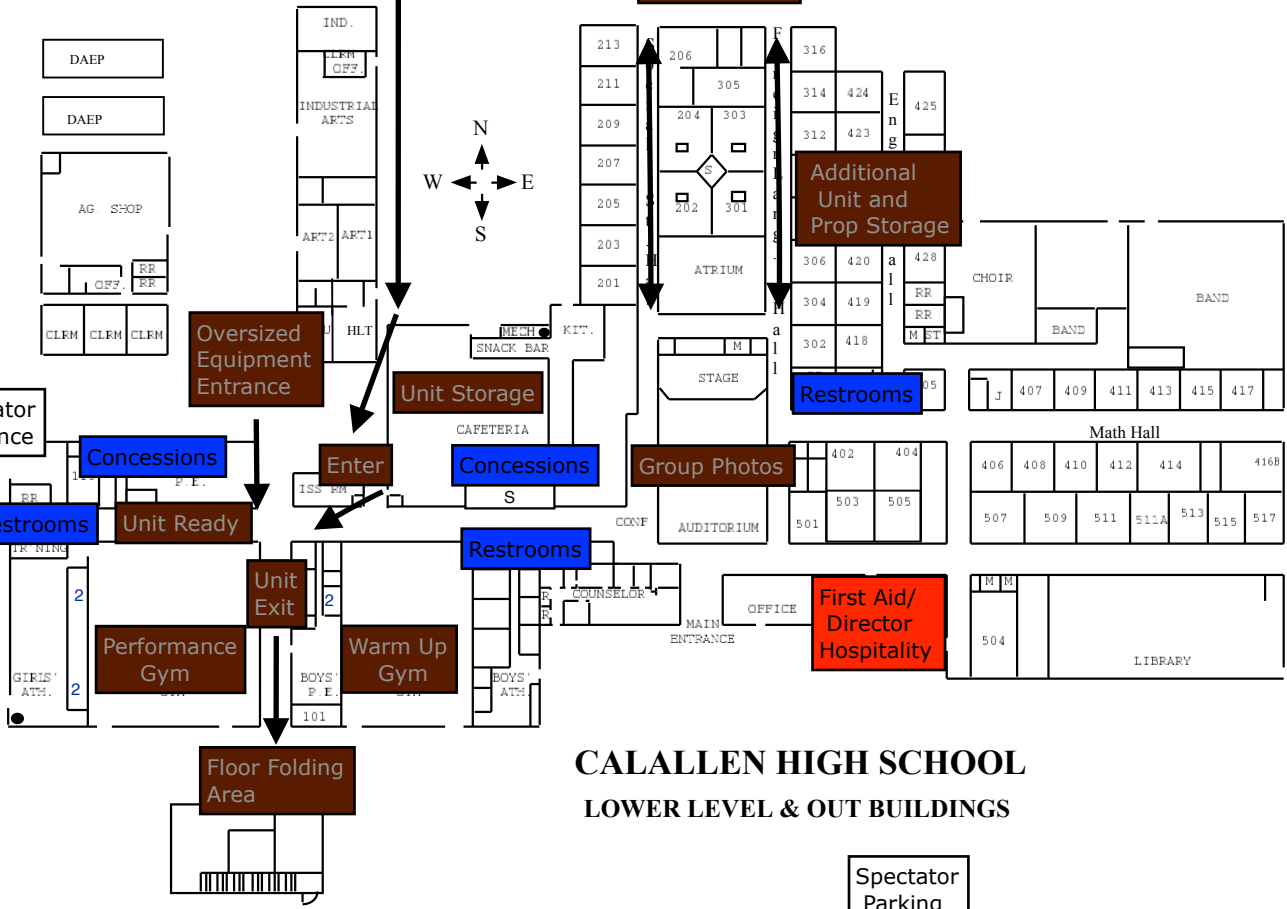
504
LIBRARY

Floor Folding Area

CALALLEN HIGH SCHOOL LOWER LEVEL & OUT BUILDINGS

Spectator Parking

Spectator Parking



Unit Exit

Performer Seating

*Time Ends
(Front to Back)*

Horizontal Time Line

*Time Starts
(Front to Back)*

Unit Entrance

Spectator Seating

